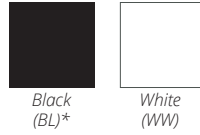


PremierComfort® (Model PC500) Sled Stacking Chairs

FEATURES

- Durable polypropylene seat and back
- Generous dimensions
- Weight capacity 300lbs.
- Strong 7/16" diameter steel wire frame
- Optional integral frame ganging
- Textile options available - call for a custom quote!
- Ask us about logo stamping!
- Order qty - minimum 300 chairs for special colors

COLORS:



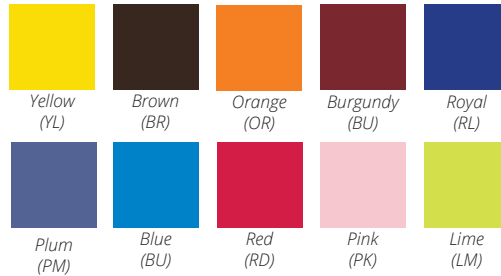
Build & Explore your options on our Product Builder website: <https://pc.psfurniture.com/>

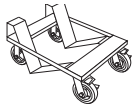
* Black is the only in-stock color we offer. Please call for availability on White.



PC500 - Plastic Seat & Solid Back (shown)

SPECIAL COLORS:



STYLE	MODEL NUMBER	DESCRIPTION	WEIGHT (LBS)	LIST PRICE
PC500 - Solid Back (Plastic Seat & Back)	PC500-CH-##-S	Chrome Frame & Solid Back Available in QSP (see below)	14.3	\$238
PC500 - Solid Back w/ Ganging (Plastic Seat & Back)	PC500-CH-##-S-G	Chrome Frame & Solid Back Integral Frame Ganging	14.3	\$263
 Dolly	HD-SSD	Model PC500 stack 30 high	50	\$1,275
Parts				
PC500 Solid Black Seat Back	PC-S-BL-BK	Sold in QTY 1	n/a	\$55
PC500 Solid Black Seat	PC-S-SEAT-BL	Sold in QTY 1	n/a	\$55
Replacement Translucent Feet	PC-FEET	Sold in QTY 1	n/a	\$5



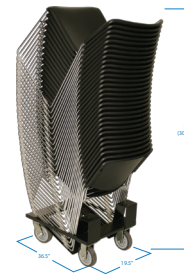
Logo Stamping
Call for custom quote!



Integral Frame Ganging



PC500 with Integral Frame Ganging



Transport System HD-SSD