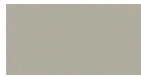




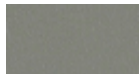
HYDE PARCHMENT



EVO CV ASH



PUTTY



PEWTER



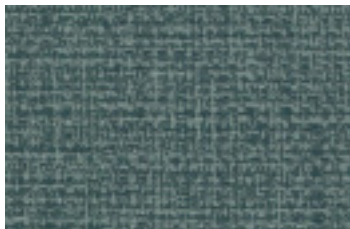
VANGUARD CV FOIL



PEBBLE



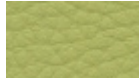
FRENCH



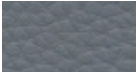
LINEN CV CYPRUS



TRIBECA CLOUD



PERIDOT



LONDON



TANGELO



BLUET



JETTY



CREME



LUNETTE



SPRUCE



PARCHMENT



SKY



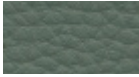
MICA



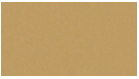
CASCADE



CELADON



FERN



CORK



KELLY



BLUESTAR



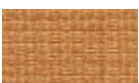
GILDED



SAVOR



AUTUMN



MANDARIN



JADE



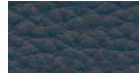
DOWNPOUR



MARINER



FOSSIL



INKWELL



AQUA



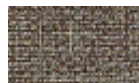
INDIGO



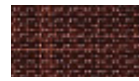
CYPRESS



SPROUT



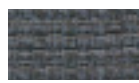
CAVE



SEQUOIA



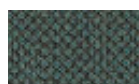
KHAKI



CADET



RUBINE



PLUME



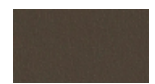
CYPRUS



ONYX



SADDLE



MINK



ONYX



CALICO



STEEL



CARBON



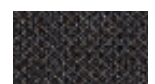
NICKEL



CHARCOAL



SHADOW



SLATE

CV SOLIDS

ALLIANCE

Pattern - width	Fiber content	Finish	Abrasion	Lightfastness	Grade	Cleaning code
EVO CV - 54" 🔥 ▲ ✨ 🌿 ☆ *	100% Clean Vinyl/Phthalate Free	Protective Topcoat	1,000,000 double rubs	Class 4 200 hours	3	WS BC (10:1)
Hyde CV - 54" 🔥 ▲ ✨ 🌿 ☆ *	100% Clean Vinyl/Phthalate Free	Protective Topcoat	1,000,000 double rubs	Class 5 200 hours	4	WS BC (10:1)
Linen CV - 54" 🔥 ▲ ✨ 🌿 ☆ *	100% Clean Vinyl/Phthalate Free	Protective Topcoat	288,000 double rubs	Class 4.5 200 hours	4	WS BC (10:1)
Tribeca CV - 54" 🔥 ▲ ✨ 🌿 ☆ *	100% Clean Vinyl/Phthalate Free	Protective Topcoat	100,000 double rubs	Class 4 200 hours	5	WS BC (10:1)
Vanguard CV - 54" 🔥 ▲ ✨ 🌿 ☆ *	100% Clean Vinyl/Phthalate Free	Protective Topcoat	100,000 double rubs	Class 4 200 hours	5	WS BC (10:1)



GREENGUARD certified.
CA Section 01350 compliant
Eligible for CHPS Low-Emitting
Material Credits



Search for fabrics by
approved cleaners



Find hundreds of pre-approved,
in grade and in stock fabrics
in 5 simple steps

* ACT® Registered Certification Marks

These fabrics when used with proper components are compatible with California Technical Bulletin 133

Multiple factors affect fabric durability and appearance retention, including end-user application and proper maintenance

Abrasion test results exceeding ACT Performance Guidelines are not an indicator of product lifespan

Cleaning Code Definition

- WS: Clean with water-based cleaning agents or foam
- BC: Bleach Cleanable (10:1)

Visit memosamples.com to view full pattern repeat and complete specs

©2022

08993417



memosamples.com | 800.366.6839

MOMENTUM
TEXTILES & WALLCOVERING