



THE ACTON® SEATING LINE  
1.800.762.0415 | [psfurniture.com](http://psfurniture.com)



## A Timeless Classic

Created by award-winning designer Hugh Acton, the Acton® chair is a mid-century modern American classic. “Acton Stackers” are found in spaces and places throughout North America, including military bases, corporate meeting spaces, churches and universities.

The Acton chair’s ergonomically-sculpted seat and back provide comfort even for long hours of sitting. This iconic seating design of Hugh Acton is timeless and offers unequaled flexibility.





## Unique Flexible Design

The stacker's unique Z-shape frame offers both comfort and style. It's simple design allows an almost infinite array of mix-and-match features and options.

- Contoured back design provides lumbar support.
- Exclusive 14-gauge tubular steel Z-shaped frame design, with 16-gauge steel inner reinforcement for strength and durability.
- Mar-resistant, textured polypropylene seat and back available in sixteen standard colors.
- Upholstery available for added comfort.
- Waterfall seat provides ergonomic leg support.
- Powder coat epoxy frame colors, plus optional chrome for stacker sled base only.
- Weight Capacity: 300 lbs.



### Acton Caster Base Chair and Stool

This task chair has a swivel-tilt locking feature, an adjustable range of 4.25", an adjustable foot ring and can fit a variety of desk heights.



### Acton Stacker Sled-Base Chair

All Models are available with 3 options:

- Non-Upholstered (All Plastic)
- Seat Only Upholstered (Plastic Back)
- Fully Upholstered Seat & Back



Sculptured armrest attachment is available for enhanced comfort.



Armless version allows for increased mobility and easier access.



Stacker chairs can be ganged together with an optional welded clip connector.



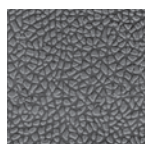
## FINISHES

PS Furniture's Acton® chair includes many different finish options, including including choice of 11 shell colors and 6 different frame finish options. Acton's color palette can complement any environment.

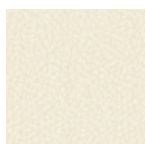
### SHELL COLORS



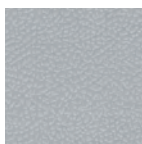
Black (H)



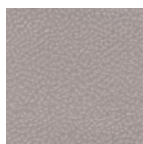
Steel Grey (Y)



Grey  
Taupe (G)



Platinum (W)



Pearl (A)



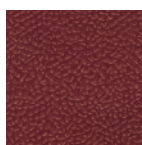
Aqua (J)



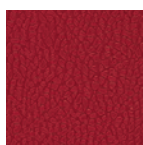
Sky (N)



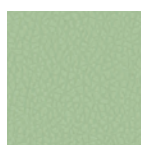
Navy (U)



Dark  
Burgundy (3)



Pomegranate  
(8)



Leaf (B)

### FRAME FINISHES



Black (H)



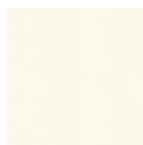
Steel Grey (Y)



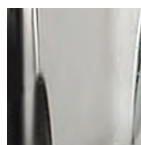
Grey  
Taupe (G)



Platinum (W)



Pearl (A)



Chrome  
(Sled Base Only)



### ACTON CHAIR DOLLY

This space-efficient dolly accommodates 26 non-upholstered or 18 upholstered Acton stackers.