



WALS™

WALS-X™

TEXTILE STANDARDS



psfurniture

1.800.762.0415 | psfurniture.com

GRADE 1: Bio-Felt



Burnt Orange



Blue



Charcoal



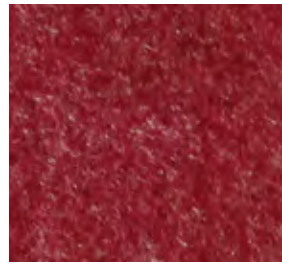
Light Gray



Tan



Chocolate



Raspberry

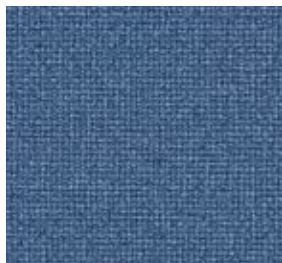


Green

GRADE 2: Carnegie - Hashtag



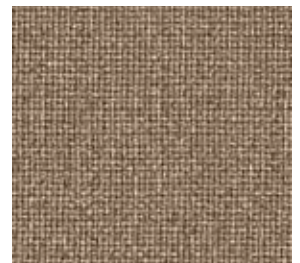
Orange



Denim



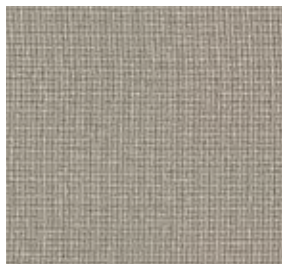
Shadow



Brown



Stone



Taupe

WHEEL COLOR OPTIONS *Note: Laminate options available*



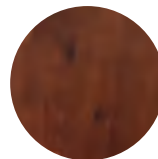
White Wash



Natural



Honey

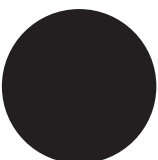


Cherry

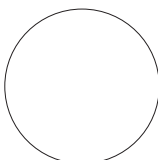


Dark Brown

HANDLE METAL COLOR OPTIONS



Black



White



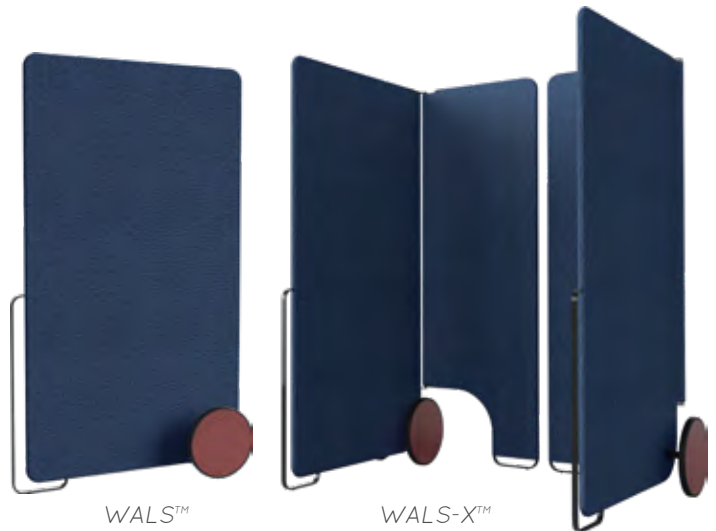
Silver



Gold

WALS™ & WALS-X™

WALS™ are high-quality, portable lightweight, acoustical panels that can be easily positioned to create private areas within a larger open concept space. WALS™ not only provide visual privacy but also help control noisy environments through the use of our patented Revolution® core technology. WALS™ are made of a proprietary lightweight composite core wrapped in layers of acoustic materials. This carefully studied "sandwich" of materials provides optimal acoustic damping in a panel that is remarkably thin. WALS™ are strong and stiff but incredibly light and easy to roll in and out of any space.



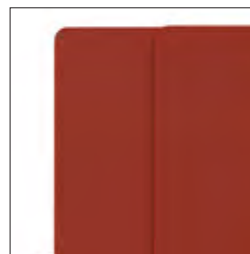
FEATURES

- Standard covering materials include:
 - GRADE 1: Bio-Felt
 - GRADE 2: Carnegie – Hashtag
- Wheels can be all wood or include tires for optimal rolling
- Wheel to wheel = 14.250" W
- WALS™ (single panel model)
 - 38"L x 68"H x 1"W
 - Weight 39 lbs
- WALS-X™ (hinged panel model)
 - 62"L x 68"H x 1"W
 - Weight 49 lbs
 - 270° hinge allows for creation of enclosed shapes from one product



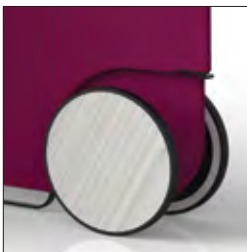
WALS-X™

Hinged panel turns 90 degrees in either direction to offer variety of shaped spaces. It also folds flat for easy transport and storage.



ACOUSTICS

Specific material arrangement has been tested to provide both sound absorption and sound blocking characteristics.



WHEELS

The wooden wheels are offered in many colors and the black tire is an optional add-on.



HANDLE AND FOOT

Metal Handle and Foot are both integrated in the structure for stabilization when moving.



2017 HIP award for
Workplace:
Standing Partitions

DESIGNED BY

UNION

MADE BY

 psfurniture

1.800.762.0415
psfurniture.com

©2018-14311

