



Acacia Collection™ Tables

1.800.762.0415 | psfurniture.com

ACACIA COLLECTION™ TABLES

Our new Acacia Collection™ of training and café tables pair any table top with a wide selection of base options. Featuring high or low pressure laminates with matching edges, as well as electric options, the Acacia Collection™ allows training, conferencing, and dining spaces to flow perfectly without sacrificing the overall look of the environment.



ARCHITECTURAL SERIES
See page 3



ARCHED SERIES
See page 4



CONTEMPORARY SERIES
See page 5



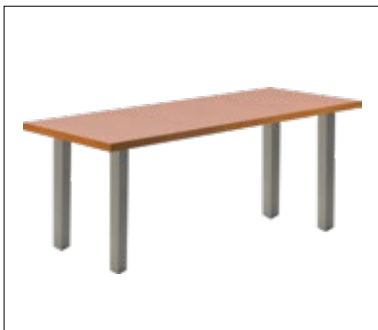
CAST SERIES
See page 6



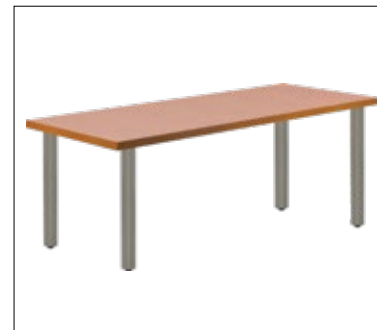
PEDESTAL SERIES
See page 7



MODESTY PANELS
See page 8



SQUARE POST SERIES
See page 9



ROUND POST SERIES
See page 10



TAPERED POST SERIES
See page 11



AUDITORIUM SERIES
See page 12

ACACIA COLLECTION™: ARCHITECTURAL SERIES



The Acacia Architectural Series Tables bring to life a combination of contemporary, clean, rectilinear lines to your training, conference, and dining environments. With options to suit any and all clients, this complete offering is sure to modernize your space.

Non-standard sizes available upon request as well as 6 standard powdercoat finishes plus a Chrome/Polished Aluminum option. Standard Laminates are Wilsonart & Formica with thousands of matching vinyl edges. Modesty panel options are perforated metal or laminate to match.

ARCHITECTURAL T-LEG:



- Construction: Rigid bolted, Column and foot are assembled
- Column: Aluminum
- Base: Die-cast aluminum
- Base Height: 27-3/4" – 40-3/4"
- Adjustable Leveler: 3/8" x 3/4" long shank
- Finish: Polished aluminum, Powder coat paint
- 18" / 24" / 30" / 36" Depths

ARCHITECTURAL X-BASE:



- Construction: Rigid bolted
- Column: Aluminum
- Base: Die-cast aluminum
- Base Height: 27-3/4" – 40-3/4"
- Adjustable Leveler: 3/8-16" x 3/4" long shank
- Finish: Polished aluminum, Powder coat paint
- 30" / 36" / 42" / 48" / 54" / 60" Diameters
- 30" / 36" / 42" / 48" Square



ACACIA COLLECTION™: ARCHED SERIES

The Acacia Arched Series Tables re-invigorate a classic styling with smooth detailing, flexibility, and improved functionality. The table design allows your training, conferencing, and dining spaces to flow perfectly without sacrificing the overall look of the environment.

Non-standard sizes available upon request as well as 6 standard powdercoat finishes plus a Chrome/ Polished Aluminum option. Standard Laminates are Wilsonart & Formica with thousands of matching vinyl edges. Modesty panel options are perforated metal or laminate to match.

ARCHED X-BASE:



- Construction: Rigid bolted
- Tubing: Column 3" OD x 16 Gauge
- Base 1-3/8" OD x 13 Gauge
- Mounting Plate: 12" x 12" x 4 Gauge steel.
- Tie Rod: 1/2-13 threaded rod
- Base Height: 27-3/4" – 40-3/4"
- Adjustable Leveler: 1-3/8" diameter and 1/4" x 5/8" long stud
- Finish: Chrome or powder coat paint
- 30" / 36" / 42" / 48" / 54" Diameters

ARCHED T-BASE:



- Construction: Welded for maximum strength and stability
- Flip mechanism is mechanically attached to the table base
- Tubing: Column 2" OD x 14 Gauge
- Base 1-3/8" OD x 13 Gauge
- Base Height: 27-3/4" – 40-3/4"
- Adjustable Leveler: 1-3/8" diameter and 1/4" x 5/8" long stud
- Finish: Chrome or powder coat paint
- 18" / 24" / 30" / 36" Depths

ACACIA COLLECTION™: CONTEMPORARY SERIES



The Acacia Contemporary Series Tables offer a sleek modern design that transforms your training, conferencing, and dining spaces. The softly detailed lines in the base provide a unique contemporary aesthetic that does not sacrifice durability and versatility.

Non-standard sizes available upon request as well as 6 standard powdercoat finishes plus a Chrome/ Polished Aluminum option. Standard Laminates are Wilsonart & Formica with thousands of matching vinyl edges. Modesty panel options are perforated metal or laminate to match.

CONTEMPORARY T-BASE:



- Construction: Bolted, welded combination, Column and feet are assembled
- Flip-Top mechanism is mechanically attached to the table base
- Column: 2-1/4" tubing OD x 13 Gauge
- Base: Cast aluminum
- Base Height: 27-3/4" – 40-3/4"
- Adjustable Leveler: 3/8"-x 3/4" long shank
- Finish: Polished aluminum/Chrome, Satin aluminum/ Satin chrome, Powder coat
- 18" / 24" / 30" / 36" Depths

CONTEMPORARY X-BASE:



- Construction: Bolted, welded combination
- Column: 2-1/4" tubing OD x 13 Gauge
- Base: Cast aluminum
- Mounting Plate:
 - Fabricated steel 4 Gauge x 12"x12", and 8"x8"
- Base Height: 27-3/4" – 40-3/4"
- Adjustable Leveler: 3/8"-16 x 3/4" long shank
- Finish: Polished aluminum/Chrome, Satin aluminum/Satin chrome, Powder coat paint
- 30" / 36" / 42" / 48" / 54" Diameters
- 30" / 36" / 42" Squares



ACACIA COLLECTION™: CAST SERIES

The Acacia Cast Series Tables provide the ultimate versatility whether your space is constantly being transformed, or remains stationary with all the power & data flowing among your configuration. This durable, proven design will be sure to provide everything your application demands.

Non-standard sizes available upon request as well as 6 standard powdercoat finishes plus a Chrome/ Polished Aluminum option. Standard Laminates are Wilsonart & Formica with thousands of matching vinyl edges. Modesty panel options are perforated metal or laminate to match.

CAST T-BASE:



- Construction: Bolted, welded combination, column and feet are assembled
- Flip-Top mechanism is mechanically attached to the table base
- Column: 2-1/4" tubing OD x 13 Gauge
- Base: Cast aluminum
- Base Height: 27-3/4" – 40-3/4"
- Adjustable Leveler: 3/8" x 3/4" long shank
- Finish: Polished aluminum/Chrome, Satin aluminum/ Satin chrome, Powder coat paint
- 18" / 24" / 30" / 36" Depths

CAST 4 COLUMN X-BASE:



- Column: 2-1/4" steel tubing
- Base: Cast aluminum
- Mounting Plate:
 - Fabricated steel .12" x 4" x 4" (4)
 - Requires (16) #12-14 screws
- Base Height: 27-3/4" – 40-3/4"
- Adjustable Leveler: 3/8" x 3/4" long shank
- Finish: Polished aluminum/Chrome, Satin aluminum/Satin chrome, Powder coat paint
- 60" / 72" / 84" Diameters
- 30" / 36" / 42" / 48" / 54" X-Base Diameters

ACACIA COLLECTION™: PEDESTAL SERIES



The Acacia Pedestal Series Tables allow design back into your dining and café spaces. These highly durable tables provide substantial to sleek styling while the disc appears to disappear into the floor without sacrificing the durability of the overall table.

Non-standard sizes available upon request as well as 6 standard powdercoat finishes plus a Chrome/ Polished Aluminum option. Standard Laminates are Wilsonart & Formica with thousands of matching vinyl edges. Modesty panel options are perforated metal or laminate to match.

ROUND PEDESTAL BASE:



- Construction: Mounting plates are welded to columns. Discs are bolted to columns from the bottom side for extra strength and anti-rotation
- Column: Fabricated steel 16 Gauge
- Fixed Mounting Plate: 12" x 12" x 4 Gauge steel
- Adjustable Leveler: Optional
- Finish: Chrome or powder coat paint
- 30" / 36" / 42" / 48" / 54" Diameters
- 30" / 36" / 42" / 48" Square

TAPERED PEDESTAL BASE:



- Construction: Mounting plates are welded to columns. Discs are bolted to columns from the bottom side for extra strength and anti-rotation
- Column: Fabricated steel 16 Gauge
- Fixed Mounting Plate: 12" x 12" x 4 Gauge steel
- Adjustable Leveler: Optional
- Finish: Chrome or powder coat paint
- 30" / 36" / 42" Diameters



ACACIA COLLECTION™: MODESTY PANEL

Modesty Panels for the Acacia Collection™ are designed for a seamless fusion of functionality and a clean aesthetic. All modesty panels are attached to the table legs in order to avoid any tampering or clunkiness while moving the table throughout your space or when engaging the flip-top mechanism to flip the table-top up and nest the tables together. This design feature makes for a very clean, functional, and great looking complete table!

METAL MODESTY PANELS:



Construction:

- Perforated Fabricated Steel
- Bolts onto the Leg Assembly
- Only 3/4" gap from the bottom of the table top to the Modesty
- Offers almost 10" of Modesty protection

LAMINATE MODESTY PANELS:



Construction:

- High Pressure Laminate w/ 3MM Edge
- 3/4" thick panel
- Bolts to the leg assembly
- Only 3/4" gap from the bottom of the table top to the Modesty
- Offers almost 10" of Modesty protection
- Wilsonart & Formica Standard Laminates

ACACIA COLLECTION™: SQUARE POST SERIES



The Acacia™ Square Post Series tables offers an opportunity to mount the leg flush with the corner of the table top for an inspiring, high-end look. Offered in both a 2" and 3" square leg with an adjustable leveler, the Square Post Series leg is sure to add an element of distinction to your space.

Non-standard sizes available upon request as well as 6 standard powdercoat finishes plus a Chrome/Polished Aluminum option. Standard Laminates are Wilsonart & Formica with thousands of matching vinyl edges. Modesty panel options are perforated metal or laminate to match.

SQUARE POST BASE:



- Construction: Welded for maximum strength and stability
- Column: Tubing 14 gage wall
- Fixed Top Plate: Fabricated steel
- Height: 27-3/4"
- Adjustable Leveler
- Finish: Chrome or powder coat paint



ACACIA COLLECTION™: ROUND POST SERIES

The Acacia™ Round Post Series tables make a statement. Distinctive and stylish, this leg is the choice of many who appreciate value and style. Round Post Series tables add the detail needed to give a look of distinction and durability.

Non-standard sizes available upon request as well as 6 standard powdercoat finishes plus a Chrome/Polished Aluminum option. Standard Laminates are Wilsonart & Formica with thousands of matching vinyl edges. Modesty panel options are perforated metal or laminate to match.

ROUND POST BASE:



- Construction: Welded for maximum strength and stability
- Column: 2" tubing 14 gage wall
- Fixed Top Plate:
 - 125" x 6" x 6" steel
 - 6" tubes .187" x 8" x 8" steel
- Base Height: 27-3/4"
- Adjustable Leveler: 2" tubes have a 1/4-20 x 1-3/4" long shank
- Finish: Chrome or powder coat paint

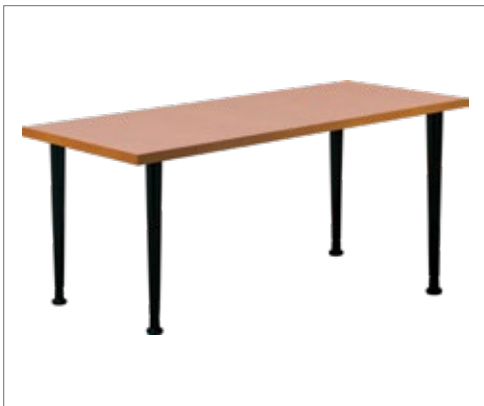
ACACIA COLLECTION™: TAPERED POST SERIES



The Acacia™ Tapered Post Series offers a fresh look for tables that will stand the test of time. The sleek tapered design provides the perfect aesthetic appeal for all applications from dining and café to reception and multi-purpose spaces.

Non-standard sizes available upon request as well as 6 standard powdercoat finishes plus a Chrome/Polished Aluminum option. Standard Laminates are Wilsonart & Formica with thousands of matching vinyl edges. Modesty panel options are perforated metal or laminate to match.

TAPERED POST BASE:



- Construction: Welded for maximum strength and stability
- Column: Fabricated steel 14 gage
- Fixed Top Plate:
 - Fabricated steel .125" x 6" x 6"
 - Requires (8) # 12-14 screws
- Adjustable Leveler: Tapered leveler from 2-1/8" to 1-7/16" diameter by 2-3/8" tall
- Caster: 2" diameter locking
- Finish: Chrome or powder coat paint



ACACIA COLLECTION™: AUDITORIUM SERIES

The Acacia™ Auditorium Series offers the combination of a rigid, welded, and bolted construction along with a clean look. Seminar tables, lecture halls, restaurants and cafeterias are all ideal applications for our line of surface mounted Auditorium Series bases. These legs are securely bolted to the floor for an ideal fixed table solution

Non-standard sizes available upon request as well as 6 standard powdercoat finishes plus a Chrome/ Polished Aluminum option. Standard Laminates are Wilsonart & Formica with thousands of matching vinyl edges. Modesty panel options are perforated metal or laminate to match.

AUDITORIUM BASE:



- Construction: Welded and bolted for maximum strength
- Tubing: 3" OD x 16 gage
- Floor Plate:
 - 1/4" x 5-1/2" x 7-1/4"
 - Wire access 2-1/2" diameter in floor plate
- Cover for Floor Plate: Molded plastic cover with black finish to hide mounting screws in the floor
- Floor Anchors:
 - Customer to supply (4) per base
 - 5/16" anchors required in cement
 - 3/8" toggles required in wood
- Top Plate:
 - Fabricated steel 6" x 9"
 - Requires (6) # 12-14 screws
- Base Height - 27-3/4"
- Finish: Powder coat paint

ACACIA COLLECTION™: COLOR OPTIONS

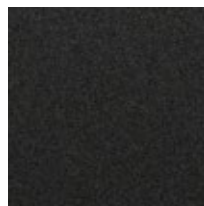
STANDARD HIGH PRESSURE LAMINATES:

Choose from any Wilsonart® or Formica® with thousands of matching vinyl edges.

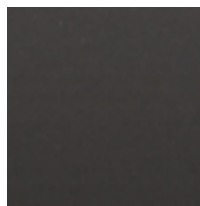
STANDARD BASE COLOR OPTIONS:



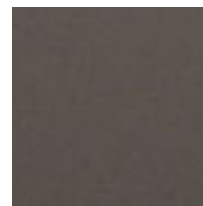
Black (BL)



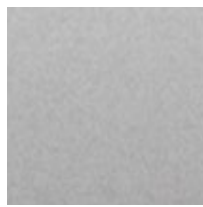
Black Wrinkle (BW)



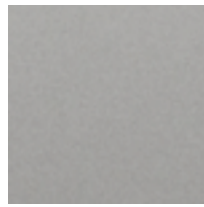
Dark Grey (DG)



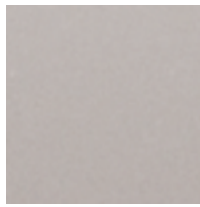
Medium Tone (MT)



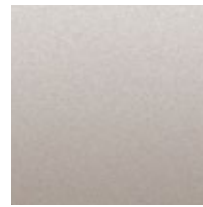
Silver (SV)



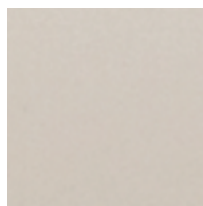
Medium Gray (MG)



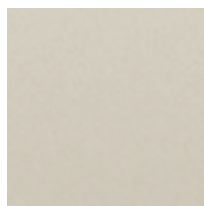
Inner Tone Light (IT)



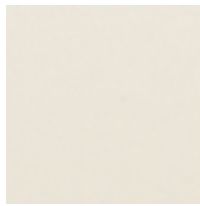
Champagne (CN)



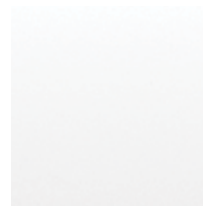
Light Brown (LB)



Light Tone (LT)



Soft White (SW)



Sky White (SK)



1.800.762.0415 | psfurniture.com