

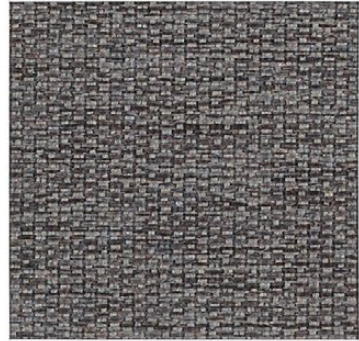
Interactive Samples Click on the image to order a memo sample.



Highlight
64460 Mist



Sprint
64022 Quarry



Shift
64505 Magnet



Shift
64490 Cirrus



Refraction
64473 Meringue



Sprint
64021 Ivory



Refraction
64475 Calcite



Blip
64233 Marble



Shift
64491 Frost



Blip
64235 Quarry



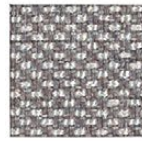
Highlight
64458 Linen



Bryant Park
6555 Pumice



Shift
64497 Aqueduct



Highlight
64464 Tempest



Sprint
64028 Breeze



Sprint
64033 Driftwood



Pivot
64510 Rhodium



Pivot
64513 Grigio



Refraction
64476 Foil



Inside Track
63630 Argent



Shift
64501 Limestone



Refraction
64483 Lodge



Highlight
64462 Nutmeg



Blip
64238 Pebble



Bryant Park
6560 Gunmetal



Pivot
64517 Pewter



Sprint
64026 Graphite



Sprint
64037 Peat



Shift
64504 Mushroom



Highlight
64468 Anvil



Sprint
64032 Storm



Blip
64249 Ore



Sprint
64038 Abyss



Ace
6545 Fudge



Blip
64241 Earth



Ace
6540 Char



Refraction
64484 Shale

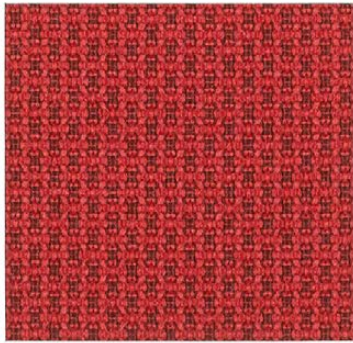


Pivot
64521 Vesper



Inside Track
63641 Jet

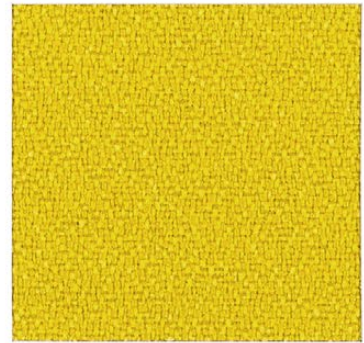
Interactive Samples Click on the image to order a memo sample.



Refraction
64481 Robust



Inside Track
63628 Blaze



Pivot
64516 Buttercup



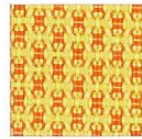
Shift
64492 Peony



Shift
64502 Clementine



Sprint
64029 Blaze



Refraction
64474 Papaya



Shift
64494 Oro



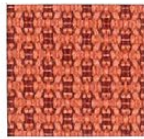
Bryant Park
6556 Curry



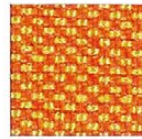
Highlight
64465 Carmine



Highlight
64461 Infrared



Refraction
64477 Guava



Highlight
64457 Sunflow



Highlight
64455 Soleil



Pivot
64520 Savannah



Inside Track
63632 Passion



Blip
64243 Red Hot



Inside Track
63629 Roma



Bryant Park
6551 Marigold



Sprint
64024 Gold



Blip
64239 Retriever



Highlight
64466 Iris



Sprint
64034 Cherry



Shift
64493 Poppy



Bryant Park
6552 Medoc



Blip
64240 Pumpkin



Sprint
64025 Twig



Pivot
64524 Pansy



Blip
64245 Wisteria



Pivot
64518 Dahlia



Pivot
64511 Winterberry



Pivot
64514 Chai



Bryant Park
6564 Chocolate



Ace
6537 Monarch



Inside Track
63636 Violet



Ace
6542 Petunia



Blip
64244 Garnet

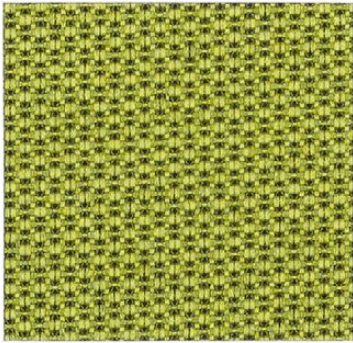


Sprint
64030 Rust

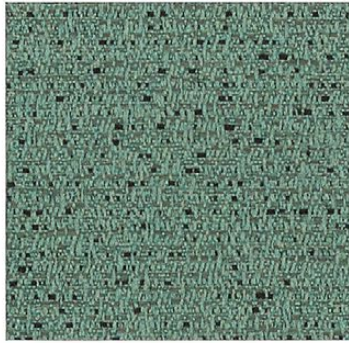


Pivot
64522 Chestnut

Interactive Samples Click on the image to order a memo sample.



Bryant Park
6561 Crocodile



Blip
64237 Mineral



Highlight
64467 Lido



Refraction
64478 Delft



Shift
64500 Blue Agate



Inside Track
63634 Royal



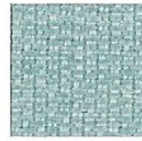
Inside Track
63627 Chartreuse



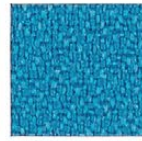
Shift
64498 Margarita



Pivot
64515 Fennel



Shift
64495 Seaglass



Pivot
64512 Curacao



Ace
6533 Water



Highlight
64459 Wild Rye



Refraction
64480 Anjou



Blip
64234 Gecko



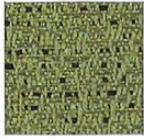
Ace
6526 Rain



Blip
64242 Moonstone



Bryant Park
6558 Saxon Blue



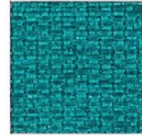
Blip
64236 Grasshopper



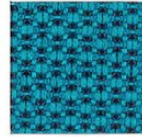
Inside Track
63631 Kelly



Refraction
64479 Ionian



Shift
64499 Tahiti



Bryant Park
6553 Nile



Shift
64496 Nantucket



Sprint
64027 Fern



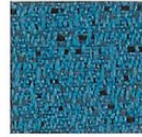
Shift
64503 Valley



Inside Track
63625 Aruba



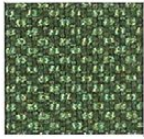
Ace
6528 Grotto



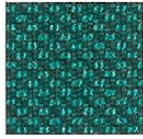
Blip
64246 Maui



Bryant Park
6563 Night Shadon



Highlight
64463 Shamrock



Highlight
64456 Fiji



Sprint
64023 Turquoise



Sprint
64031 Nocturne



Refraction
64482 Cosmos



Inside Track
63638 Ink



Pivot
64519 Spruce



Blip
64247 Scuba



Ace
6538 Neptune



Ace
6548 Midnight



Pivot
64523 Corsica



Blip
64248 Superhero



Color Story

Pattern	Content	Finish	Abrasion	Flammability*	Cleaning Code
Ace	80% Post Industrial Recycled Polyester, 20% Post Consumer Recycled Polyester	Nano-Tex™ Soil and Stain Protection	1,000,000 D. R.	California Technical Bulletin 117-2013 NFPA 260 Class 1 UFAC Class1	W
Blip	70% Polyester, 20% Eco-Intelligent Polyester, 6% Post Industrial Recycled Polyester, 4% Post Consumer Recycled Polyester	Non-PFOA Stain Resistant Finish	100,000 D. R.	California Technical Bulletin 117-2013 NFPA 260 Class 1 UFAC Class1	W-S
Bryant Park	100% Polyester	Enhanced Soil & Stain Protection	100,000 D. R.	California Technical Bulletin 117-2013 NFPA 260 Class 1 UFAC Class1	W
Highlight	70% Post Consumer Recycled Polyester, 30% Polyester	Non-PFOA Stain Resistant Finish	100,000 D. R.	California Technical Bulletin 117-2013 ASTM E-84 (Unadhered) NFPA 260 Class 1 UFAC Class1	W-S
Inside Track	56% Polyester, 32% Post Consumer Recycled Polyester, 12% Post Industrial Recycled Polyester	Non-PFOA Stain Resistant Finish	140,000 D. R.	California Technical Bulletin 117-2013 ASTM E-84 (Unadhered) NFPA 260 Class 1 UFAC Class1	W-S
Pivot	100% Post Consumer Recycled Polyester	Non-PFOA Stain Resistant Finish	100,000 D. R.	California Technical Bulletin 117-2013 ASTM E-84 (Unadhered) NFPA 260 Class 1 UFAC Class1	W-S
Refraction	70% Post Consumer Recycled Polyester, 30% Polyester	Non-PFOA Stain Resistant Finish	100,000 D. R.	California Technical Bulletin 117-2013 ASTM E-84 (Unadhered) NFPA 260 Class 1 UFAC Class1	W-S
Shift	75% Post Consumer Recycled Polyester, 25% Polyester	Non-PFOA Stain Resistant Finish	100,000 D. R.	California Technical Bulletin 117-2013 ASTM E-84 (Unadhered) NFPA 260 Class 1 UFAC Class1	W-S
Sprint	100% Polyester	Enhanced Soil & Stain Protection	100,000 D. R.	California Technical Bulletin 117-2013 NFPA 260 Class 1 UFAC Class1	W-S

All patterns are 54" wide.
For complete specifications visit cfstinson.com

*This term and any corresponding data refer to the typical performance in the tests indicated and should not be construed to imply the behavior of this or any other material under actual fire conditions.

*Facts is a registered trademark of the Association for Contract Textiles. Facts was developed to recognize contract textiles that conform to the rigors of the multiple-attribute NSF / ANSI 336 Sustainability Standards for Commercial Furnishings Fabrics and are 3rd party certified.

These patterns meet or exceed these A.C.T. Performance standards for Upholstery:     



Pattern Inside Track is FACTS Gold Certified and pattern Blip is Facts Silver Certified
All Patterns with the exception of Bryant Park and Sprint are produced using Recycled Fiber Content and include Non-PFOA Stain Protection
Patterns: Ace, Highlight, Pivot, Refraction and Shift are made in the USA
Patterns: Highlight, Inside Track, Pivot, Refraction and Shift are UL recognized patterns, and also meet flammability requirements for Vertical Surface Application.
All patterns are GreenGuard Gold Certified.



Stinson®

C.F. Stinson, LLC.
2849 Product Drive
Rochester Hills, MI 48309

W cfstinson.com
P 800 841 6279
F 248 299 3884