

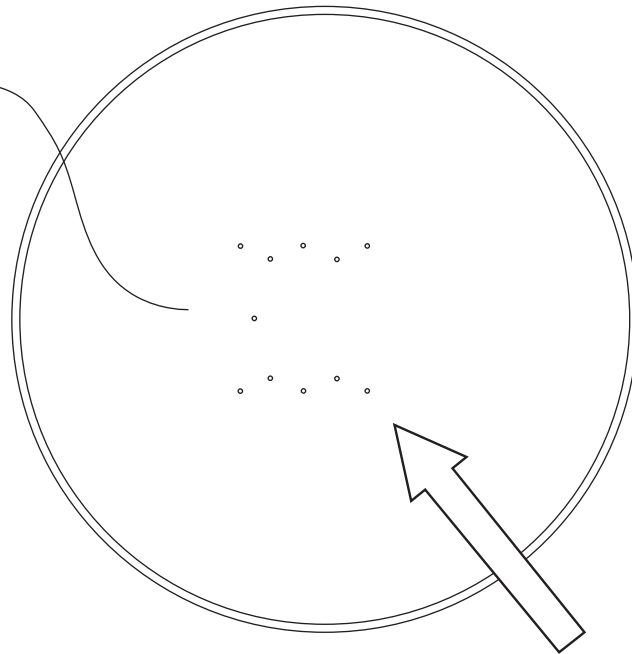
# Rollers™ Portable Table Assembly Instructions

## Zero Lift Portability™

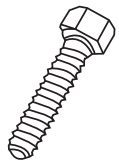
**STEP 1: Attach Rollers™ Portable Table Top to the Genufold**  
(see page 2 for next steps).



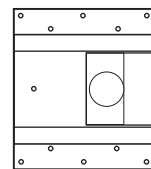
Bottom of table w/ (11)  
pre-drilled mounting holes



Align hinge mechanism with  
pre-drilled holes on table bottom  
and attach using a 5/16" nut driver  
to install (11) provided #12-24 x 3/4"  
drill tip screws into pre-drilled holes.

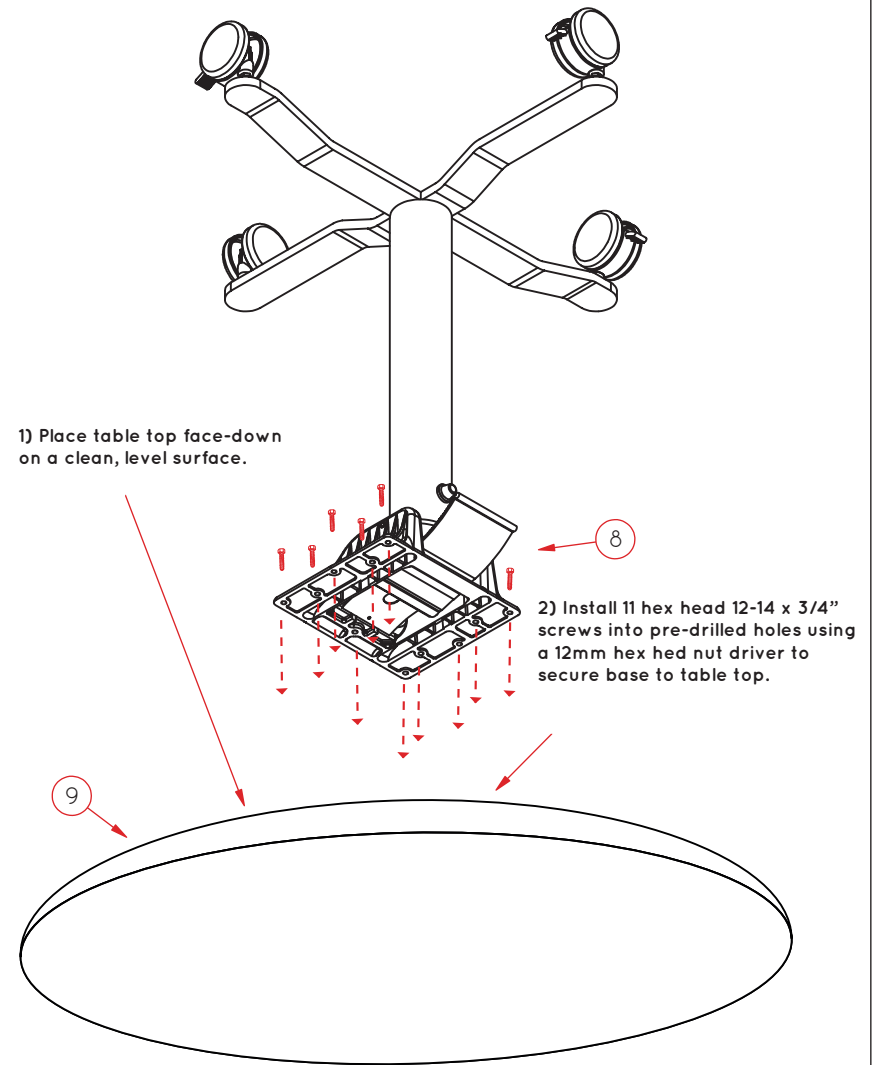
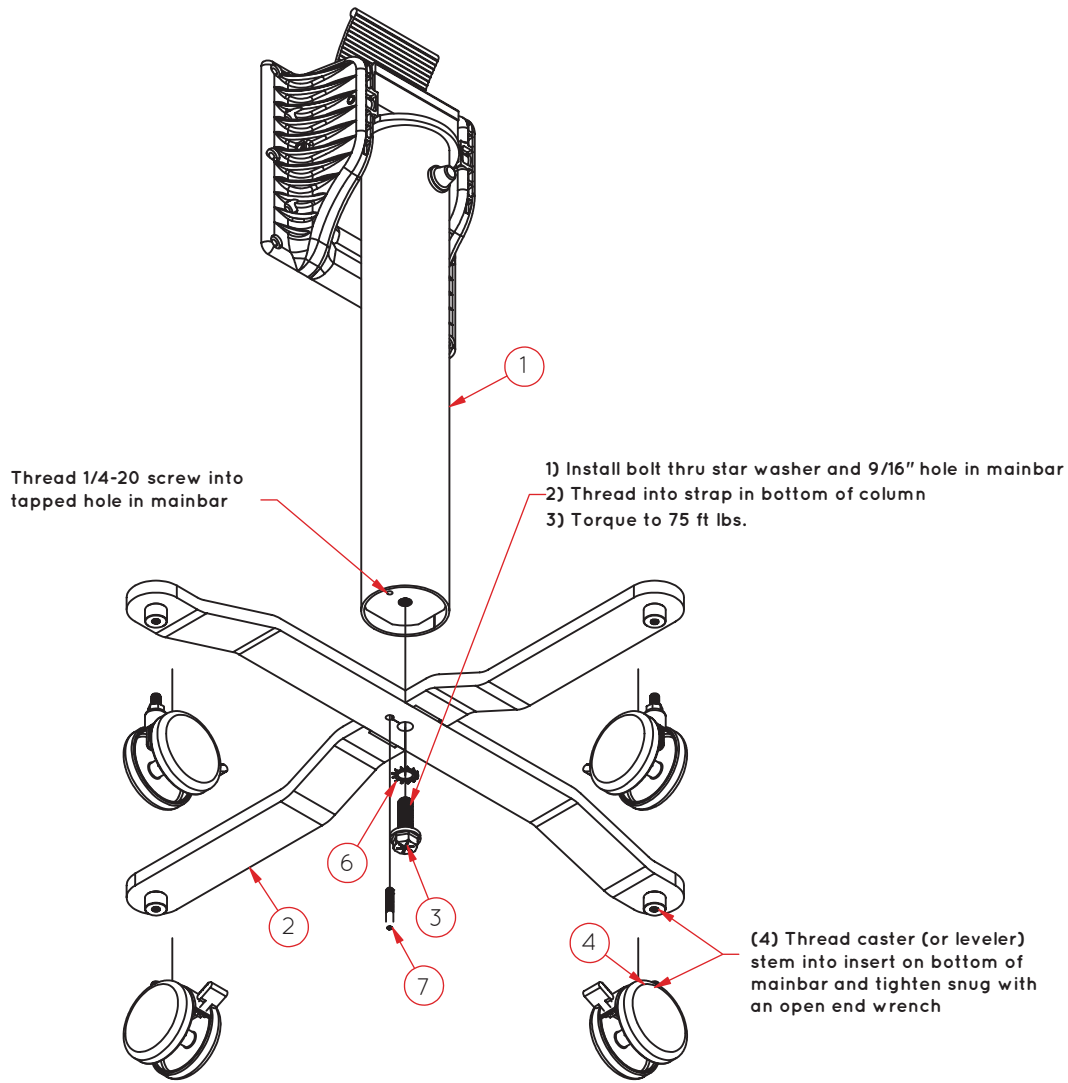


X 11



 psfurniture

1.800.762.0415  
psfurniture.com



Rollers™ Portable Table Parts		
Step	Qty	Description
1	1	317 Column Assembly - Nesting X-Base
2	1	317N Mainbar Wldt
3	1	1/2 X 1 1/2 Flange Head Bolt
4	4	3" DIA Locking Caster - 1/2" Stem
5	2	5/16-18 x 1 1/4 SHCS
6	1	Star Washer
7	1	1/4"-20 X 1 1/2" Button Head Socket Cap Screw
8	11	12-14 x 3/4" Self-Drilling, Self-Tapping Hex-Head Screws
9	1	Table Top