

# ACACIA COLLECTION™ TABLES



## ACACIA COLLECTION™ TABLES

Our new Acacia Collection™ of training and café tables pair any table top with a wide selection of base options. Featuring high or low pressure laminates with matching edges, as well as electric options, the Acacia Collection™ allows training, conferencing, and dining spaces to flow perfectly without sacrificing the overall look of the environment.

---



### ARCHITECTURAL SERIES

The Acacia Architectural Series Tables bring to life a combination of contemporary, clean, rectilinear lines to your training, conference, and dining environments. With options to suit any and all clients, this complete offering is sure to modernize your space.



### ARCHED SERIES

The Acacia Arched Series Tables re-invigorate a classic styling with smooth detailing, flexibility, and improved functionality. The table design allows your training, conferencing, and dining spaces to flow perfectly without sacrificing the overall look of the environment.



### CONTEMPORARY SERIES

The Acacia Contemporary Series Tables offer a sleek modern design that transforms your training, conferencing, and dining spaces. The softly detailed lines in the base provide a unique contemporary aesthetic that does not sacrifice durability and versatility.



### CAST SERIES

The Acacia Cast Series Tables provide the ultimate versatility whether your space is constantly being transformed, or remains stationary with all the power & data flowing among your configuration. This durable, proven design will be sure to provide everything your application demands.



### Y-BASE SERIES

The Acacia Y-Base Series Tables offer classic style that maximizes nesting capability with a flip-top table that provides a functional design element to the space.



### PEDESTAL SERIES

The Acacia Pedestal Series Tables allow design back into your dining and café spaces. These highly durable tables provide substantial to sleek styling, while the disc appears to disappear into the floor without sacrificing the durability of the overall table.



### MODESTY PANELS

Acacia Modesty Panels are designed for a seamless fusion of functionality and a clean aesthetic. All are attached to the table legs in order to avoid any tampering or clunkiness while moving the table throughout your space or when engaging the flip-top mechanism to flip the table-top up and nest the tables together.

# ACACIA COLLECTION™: ARCHITECTURAL SERIES



The Acacia Architectural Series Tables bring to life a combination of contemporary, clean, rectilinear lines to your training, conference, and dining environments. With options to suit any and all clients, this complete offering is sure to modernize your space.

Non-standard sizes available upon request as well as 6 standard powdercoat finishes plus a Chrome/Polished Aluminum option. Standard Laminates are Wilsonart & Formica with thousands of matching vinyl edges. Modesty panel options are perforated metal or laminate to match.

## ARCHITECTURAL T-LEG:



- Construction: Rigid bolted, Column and foot are assembled
- Column: Aluminum
- Base: Die cast aluminum
- Base Height: 27-3/4" – 40-3/4"
- Adjustable Leveler: 3/8" x 3/4" long shank
- Finish: Polished aluminum, Powder coat paint
- 18" / 24" / 30" / 36" Depths

## ARCHITECTURAL X-BASE:



- Construction: Rigid bolted
- Column: Aluminum
- Base: Die cast aluminum
- Base Height: 27-3/4" – 40-3/4"
- Adjustable Leveler: 3/8-16" x 3/4" long shank
- Finish: Polished aluminum, Powder coat paint
- 30" / 36" / 42" / 48" / 54" / 60" Diameters
- 30" / 36" / 42" / 48" Square



# ACACIA COLLECTION™: ARCHED SERIES

The Acacia Arched Series Tables re-invigorate a classic styling with smooth detailing, flexibility, and improved functionality. The table design allows your training, conferencing, and dining spaces to flow perfectly without sacrificing the overall look of the environment.

Non-standard sizes available upon request as well as 6 standard powdercoat finishes plus a Chrome/Polished Aluminum option. Standard Laminates are Wilsonart & Formica with thousands of matching vinyl edges. Modesty panel options are perforated metal or laminate to match.

## ARCHED X-BASE:



- Construction: Rigid bolted
- Tubing: Column 3" OD x 16 gage
- Base 1-3/8" OD x 13 gage
- Mounting Plate: 12" x 12" x 4 gage steel.
- Tie Rod: 1/2-13 threaded rod
- Base Height: 27-3/4" - 40-3/4"
- Adjustable Leveler: 1-3/8" diameter and 1/4" x 5/8" long stud
- Finish: Chrome or powder coat paint
- 30" / 36" / 42" / 48" / 54" Diameters

## ARCHED T-BASE:



- Construction: Welded for maximum strength and stability
- Flip mechanism is mechanically attached to the table base
- Tubing: Column 2" OD x 14 gage
- Base 1-3/8" OD x 13 gage
- Base Height: 27-3/4" - 40-3/4"
- Adjustable Leveler: 1-3/8" diameter and 1/4" x 5/8" long stud
- Finish: Chrome or powder coat paint
- 18" / 24" / 30" / 36" Depths

# ACACIA COLLECTION™: CONTEMPORARY SERIES



The Acacia Contemporary Series Tables offer a sleek modern design that transforms your training, conferencing, and dining spaces. The softly detailed lines in the base provide a unique contemporary aesthetic that does not sacrifice durability and versatility.

Non-standard sizes available upon request as well as 6 standard powdercoat finishes plus a Chrome/Polished Aluminum option. Standard Laminates are Wilsonart & Formica with thousands of matching vinyl edges. Modesty panel options are perforated metal or laminate to match.

## CONTEMPORARY T-BASE:



- Construction: Bolted, welded combination, Column and feet are assembled
- Flip-Top mechanism is mechanically attached to the table base
- Column: 2-1/4" tubing OD x 13 gage
- Base: Cast aluminum
- Base Height: 27-3/4" – 40-3/4"
- Adjustable Leveler: 3/8"-x 3/4" long shank
- Finish: Polished aluminum/Chrome, Satin aluminum/Satin chrome, Powder coat
- 18" / 24" / 30" / 36" Depths

## CONTEMPORARY X-BASE:



- Construction: Bolted, welded combination
- Column: 2-1/4" tubing OD x 13 gage
- Base: Cast aluminum
- Mounting Plate:
  - Fabricated steel 4 gage x 12"x12", and 8"x8"
- Base Height: 27-3/4" – 40-3/4"
- Adjustable Leveler: 3/8-16 x 3/4" long shank
- Finish: Polished aluminum/Chrome, Satin aluminum/Satin chrome, Powder coat paint
- 30" / 36" / 42" / 48" / 54" Diameters
- 30" / 36" / 42" Squares





# ACACIA COLLECTION™: CAST SERIES

The Acacia Cast Series Tables provide the ultimate versatility whether your space is constantly being transformed, or remains stationary with all the power & data flowing among your configuration. This durable, proven design will be sure to provide everything your application demands.

Non-standard sizes available upon request as well as 6 standard powdercoat finishes plus a Chrome/Polished Aluminum option. Standard Laminates are Wilsonart & Formica with thousands of matching vinyl edges. Modesty panel options are perforated metal or laminate to match.

## CAST T-BASE:



- Construction: Bolted, welded combination, column and feet are assembled
- Flip-Top mechanism is mechanically attached to the table base
- Column: 2-1/4" tubing OD x 13 gage
- Base: Cast aluminum
- Base Height: 27-3/4" – 40-3/4"
- Adjustable Leveler: 3/8" x 3/4" long shank
- Finish: Polished aluminum/Chrome, Satin aluminum/ Satin chrome, Powder coat paint
- 18" / 24" / 30" / 36" Depths

## CAST 4 COLUMN X-BASE:



- Column: 2-1/4" steel tubing
- Base: Cast aluminum
- Mounting Plate:
  - Fabricated steel .12" x 4" x 4" (4)
  - Requires (16) #12-14 screws
- Base Height: 27-3/4" – 40-3/4"
- Adjustable Leveler: 3/8" x 3/4" long shank
- Finish: Polished aluminum/Chrome, Satin aluminum/ Satin chrome, Powder coat paint
- 60" / 72" / 84" Diameters
- 30" / 36" / 42" / 48" / 54" X-Base Diameters

# ACACIA COLLECTION™: Y-BASE SERIES



The Acacia Y-Base Series Tables offer classic style that maximizes nesting capability with a flip-top table that provides a functional design element to the space.

Non-standard sizes available upon request as well as 6 standard powdercoat finishes plus a Chrome/Polished Aluminum option. Standard Laminates are Wilsonart & Formica with thousands of matching vinyl edges. Modesty panel options are perforated metal or laminate to match.

## Y-BASE:



- Tubing: 1.5" Steel Tubing; 16 gage
- Fixed top plate: 8" X 8"
- Fliptop top plate: 2.1" X 4.1"
- Finish: Chrome or powder coat paint

## Y-BASE FLIP-TOP:



- Tubing: 1.5" Steel Tubing; 16 gage
- Fixed top plate: 8" X 8"
- Fliptop top plate: 2.1" X 4.1"
- Finish: Chrome or powder coat paint



# ACACIA COLLECTION™: PEDESTAL SERIES

The Acacia Pedestal Series Tables allow design back into your dining and café spaces. These highly durable tables provide substantial to sleek styling while the disc appears to disappear into the floor without sacrificing the durability of the overall table.

Non-standard sizes available upon request as well as 6 standard powdercoat finishes plus a Chrome/Polished Aluminum option. Standard Laminates are Wilsonart & Formica with thousands of matching vinyl edges. Modesty panel options are perforated metal or laminate to match.

## ROUND PEDESTAL BASE:



- Construction: Mounting plates are welded to columns. Discs are bolted to columns from the bottom side for extra strength and anti-rotation
- Column: Fabricated steel 16 gage
- Fixed Mounting Plate: 12" x 12" x 4 gage steel
- Adjustable Leveler: Optional
- Finish: Chrome or powder coat paint
- 30" / 36" / 42" / 48" / 54" Diameters
- 30" / 36" / 42" / 48" Square

## TAPERED PEDESTAL BASE:



- Construction: Mounting plates are welded to columns. Discs are bolted to columns from the bottom side for extra strength and anti-rotation
- Column: Fabricated steel 16 gage
- Fixed Mounting Plate: 12" x 12" x 4 gage steel
- Adjustable Leveler: Optional
- Finish: Chrome or powder coat paint
- 30" / 36" / 42" Diameters



# ACACIA COLLECTION™: MODESTY PANEL



Modesty Panels for the Acacia Collection™ are designed for a seamless fusion of functionality and a clean aesthetic. All modesty panels are attached to the table legs in order to avoid any tampering or clunkiness while moving the table throughout your space or when engaging the flip-top mechanism to flip the table-top up and nest the tables together. This design feature makes for a very clean, functional, and great looking complete table!

## METAL MODESTY PANELS:



### Construction:

- Perforated Fabricated Steel
- Bolts onto the Leg Assembly
- Only 3/4" gap from the bottom of the table top to the Modesty
- Offers almost 10" of Modesty protection

## LAMINATE MODESTY PANELS:



### Construction:

- High Pressure Laminate w/ 3MM Edge
- 3/4" thick panel
- Bolts to the leg assembly
- Only 3/4" gap from the bottom of the table top to the Modesty
- Offers almost 10" of Modesty protection
- Wilsonart & Formica Standard Laminates

# ACACIA COLLECTION™: ELECTRICAL OPTIONS

## PLUG N' CHARGE



- Daisy-chain up to 10 tables on 1 circuit (non-sequential)
- 2 AC power spill-proof receptacle
- 2 USB charging 2.1 amp ports
- Color options (-##): silver (SI), black (BL), Gloss white (GW), brushed aluminum (BA)
- Plug-in or hardwire power in-feed
- Jumpers included
- Surface mount
- 4 wire 2 circuit system

## LINK N' POWER



- Daisy-chain 10 units together (non-sequential)
- 2 AC power plug-in
- 2 USB charging 2.1 amp ports
- 2 data ports
- Color options (-##): silver (SI), black (BL), white (WH), Stainless steel (SS), brushed aluminum (BA)
- 4 wire 2 circuit system
- Surface mount with metal cover
- Jumpers included

## FLIP N' CONNECT



- Interconnecting up to 8 units
- 2 AC power spill-proof receptacle
- 2 USB charging ports
- 1 HDMI port or 1 CAT6 data port
- Color options (-##): black (BL), silver (SI)
- Surface mount pop-up metal unit
- UL listed
- Jumpers included up to a 60" long table
- Jumpers for over 60" long table is \$95 list

## PLUG N' PLAY



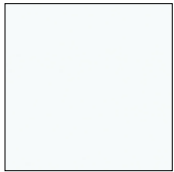
- Corded solution
- 2 AC spill-proof power receptacles
- 2 USB charging ports
- 1 CAT6 data port
- UL listed
- Color options (-##): black (BL), white (WH)
- Surface mount pop-up unit

# ACACIA COLLECTION™: COLOR OPTIONS

## STANDARD HIGH PRESSURE LAMINATES:

Any standard Wilsonart® or Formica® with thousands of matching vinyl edges.

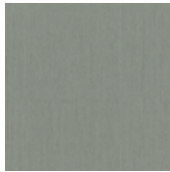
## STANDARD LOW PRESSURE LAMINATE OPTIONS:



White  
300-G2S



Classic Maple  
290-G2S



Stainless  
961-G2S



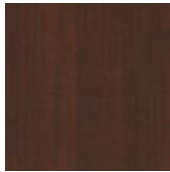
Viva Walnut  
G21-G2S



Kindle  
H67-G2S



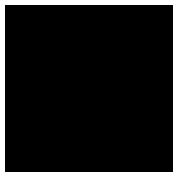
Storm  
HO5-G2S



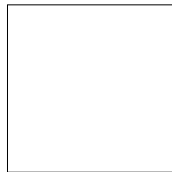
Cayenne Maple  
766-G2S

*Please note: Any laminate chosen outside of our standard laminates will have a change in price and lead time.*

## STANDARD BASE COLOR OPTIONS:



Black (BL)



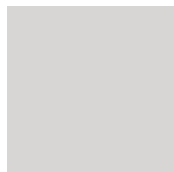
Sky White (SW)



Dark Tone (DT)



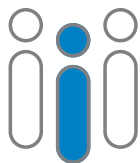
Black Wrinkle (BW)



Silver (SV)



Champagne (CP)



psfurniture  
*Furniture For Flexible Spaces*

1.800.762.0415 | [psfurniture.com](http://psfurniture.com)