
p s f u r n i t u r e



Snap™ Portable Tables are designed to eliminate the physical and mental toll meetings take on employees by fostering quick, focused, productive sessions.

FEATURES

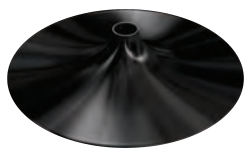
- Hexagonal shapes configure into many different meeting scenarios
- Positive-locking flip-top secures table top vertically and horizontally
- Nesting base allows for extra compact storage
- Poured urethane MAXX Edge® prevents food and bacteria collection
- Patented, lightweight composite table top core
- Choice of Formica® or Wilsonart® high-pressure laminate surface
- Rollers™ Base recommended for quick and easy meeting set up



NESTING AND ADJUSTABLE HEIGHT OPTIONS



OTHER BASE CHOICES



Black Trumpet*



Polished Chrome Trumpet*



Brushed Nickel Trumpet*



Black X-Base



Brushed Silver X-Base

* Weighted trumpet base option also available.



1.800.762.0415 | psfurniture.com

Snap™ Portable Tables