
p s f u r n i t u r e



1.800.762.0415 | psfurniture.com

Snap™ Portable Tables

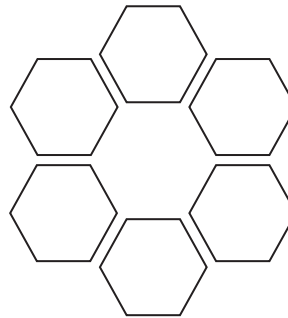
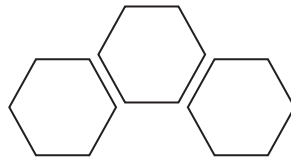
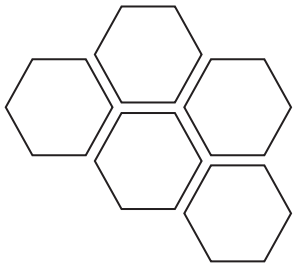
Snap™ portable tables are designed to eliminate the physical and mental toll meetings take on employees by fostering quick, focused, productive sessions.

FEATURES

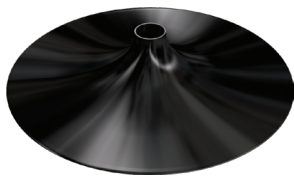
- Hexagonal shapes configure into many different meeting scenarios
- Positive-locking flip-top secures table top vertically and horizontally
- Nesting base allows for extra compact storage
- Poured urethane MAXX Edge® prevents food and bacteria collection
- Patented, lightweight composite table top core
- Choice of Formica® or Wilsonart® high-pressure laminate surface
- Rollers™ Base (pictured at right) recommended for quick and easy meeting set up



MEETING SCENARIOS



OTHER BASE CHOICES



Black Trumpet or Weighted Black Trumpet



Polished Chrome Trumpet or Weighted Polished Chrome Trumpet



Black X-Base



Brushed Silver X-Base



1.800.762.0415 | psfurniture.com

Snap™ Portable Tables